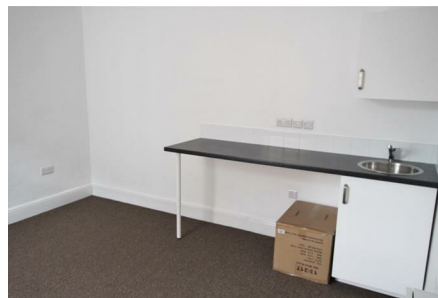


Bournemouth Road, Poole, Dorset BH14 9HT



£600 Per Calendar Month



It is one room with a kitchen worktop. NO pets allowed,

The rent is £600 a month , plus you need to pay Council Tax, and electricity which is on top up meter.

Landlord accepts the benefits, but the payment must be set directly to our account.
The studio room is for one person only.

First Floor studio room with a kitchen worktop . NO pets allowed,

The rent is £600 a month , plus you need to pay Council Tax, and electricity which is on top up meter.

Landlord accepts the benefits, but the payment must be set directly to our account.

The studio is for rent to one person only.

This convenient location is just a short walk from local shops and a is on a main bus route to town.

Available Now.





Whilst every attempt has been made to ensure the accuracy of the floor plan contained here, measurements of doors, windows, rooms and any other items are approximate and no responsibility is taken for any error, omission, or mis-statement. This plan is for illustrative purposes only and should be used as such by any prospective purchaser. The services, systems and appliances shown have not been tested and no guarantee as to their operability or efficiency can be given
Made with Metropix ©2016

Energy Efficiency Rating	
Current	Potential
Very energy efficient - lower running costs	
(92 plus) A	
(81-91) B	
(69-80) C	
(55-68) D	
(39-54) E	
(21-38) F	
(1-20) G	
Not energy efficient - higher running costs	
64	77
England & Wales	
EU Directive 2002/91/EC	

Environmental Impact (CO ₂) Rating	
Current	Potential
Very environmentally friendly - lower CO ₂ emissions	
(92 plus) A	
(81-91) B	
(69-80) C	
(55-68) D	
(39-54) E	
(21-38) F	
(1-20) G	
Not environmentally friendly - higher CO ₂ emissions	
62	76
England & Wales	
EU Directive 2002/91/EC	